

Reg. No. :

--	--	--	--	--	--	--	--	--	--

**Question Paper Code: 44706**

B.E. / B.Tech. DEGREE EXAMINATION, NOV 2018

Fourth Semester

Mechanical Engineering

14UME406 – MACHINE DRAWING

(Regulation 2014)

Duration: Three hours

Maximum: 100 Marks

Answer ALL Questions

PART A - (2 x 20 = 40 Marks)

1. (a) Sketch the actual and conventional representation for the following elements:  
external thread, splined shaft, helical tension spring, chain wheel and bearing. (20)

Or

- (b) (i) Briefly discuss about the importance of tolerance allocation and differentiate unilateral and bilateral tolerances. (10)
- (ii) Explain in detail about the selection of fits with examples. (10)
2. (a) (i) State the importance of surface roughness measurement. (10)
- (ii) Explain in details about the indications of surface waviness symbols on drawings. (10)

Or

- (b) List the different types of thread profiles and explain any four types with neat sketches. (20)

PART - B (1 x 60 = 60 Marks)

3. (a) Assemble the parts of universal coupling as shown in Figure 1 and draw,  
 (i) Half sectional front view and  
 (ii) Top view (60)

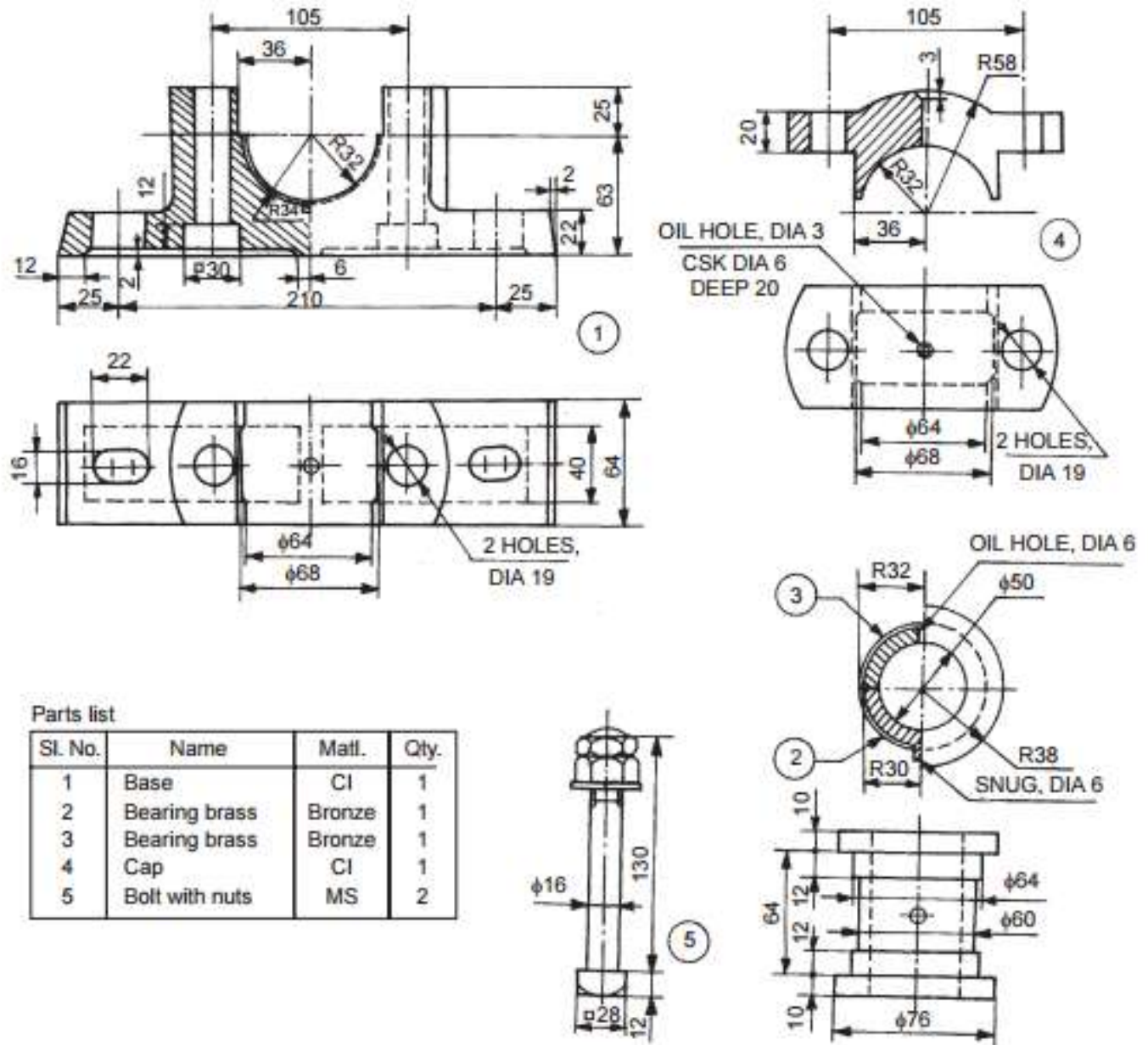


Figure 1

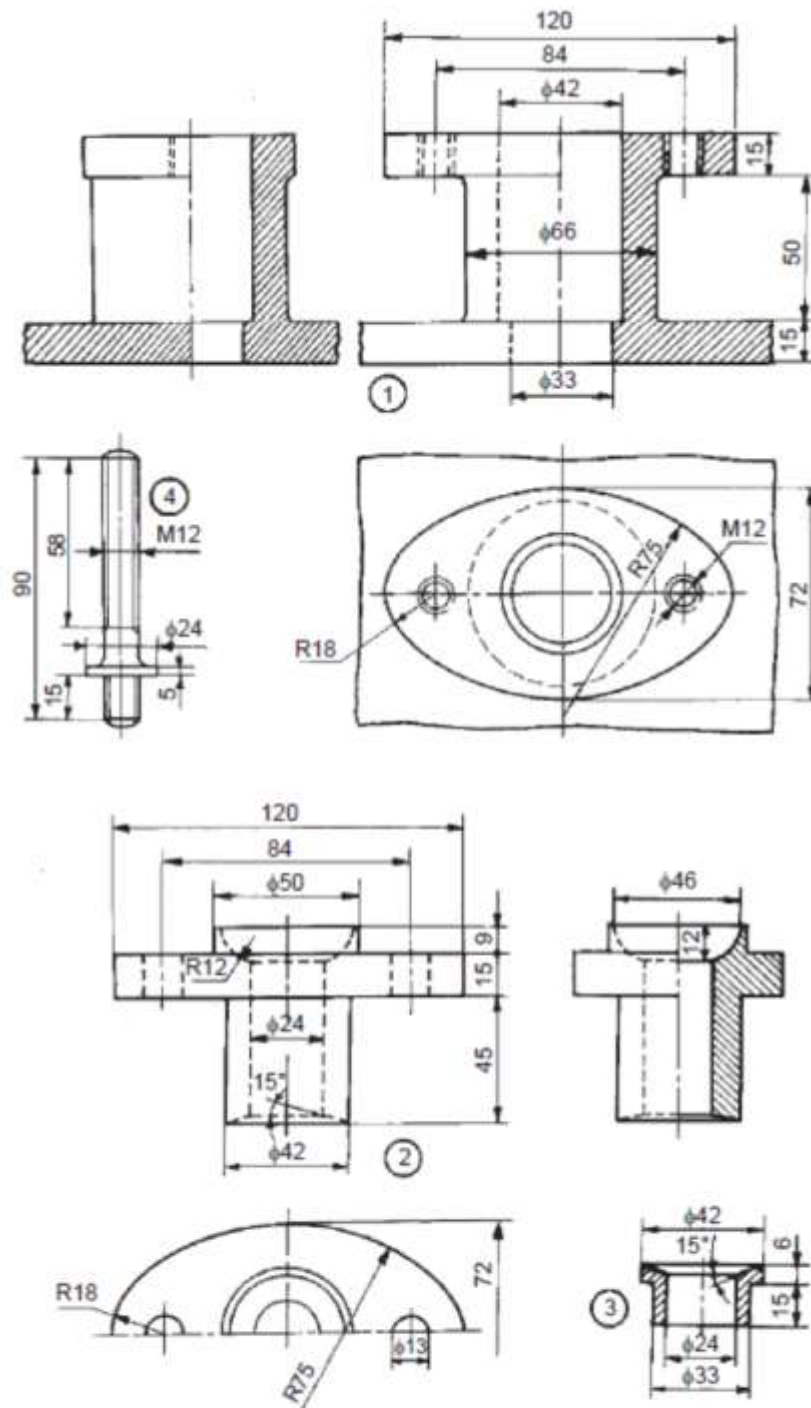
Or

- (b) Draw the following assembled views of stuffing box, details of which are given in Figure – 3.

(i) Half sectional front view

(ii) Top view

(60)



Parts list

Part No.	Name	Matl	Qty
1	Body	CI	1
2	Gland	Brass	1
3	Bush	Brass	1
4	Stud	MS	2
5	Nut, M12	MS	2

