

Reg. No. : 

--	--	--	--	--	--	--	--	--	--

**Question Paper Code: 41478**

B.E. / B.Tech. DEGREE EXAMINATION, MAY 2016

Fourth Semester

Mechanical Engineering

14UME406 – MACHINE DRAWING

(Regulation 2014)

Duration: Three hours

Maximum: 100 Marks

Answer ALL Questions

PART A - (2 x 20 = 40 Marks)

1. (a) Draw the sectional front - view and top view of the object shown in Figure 1. (20)

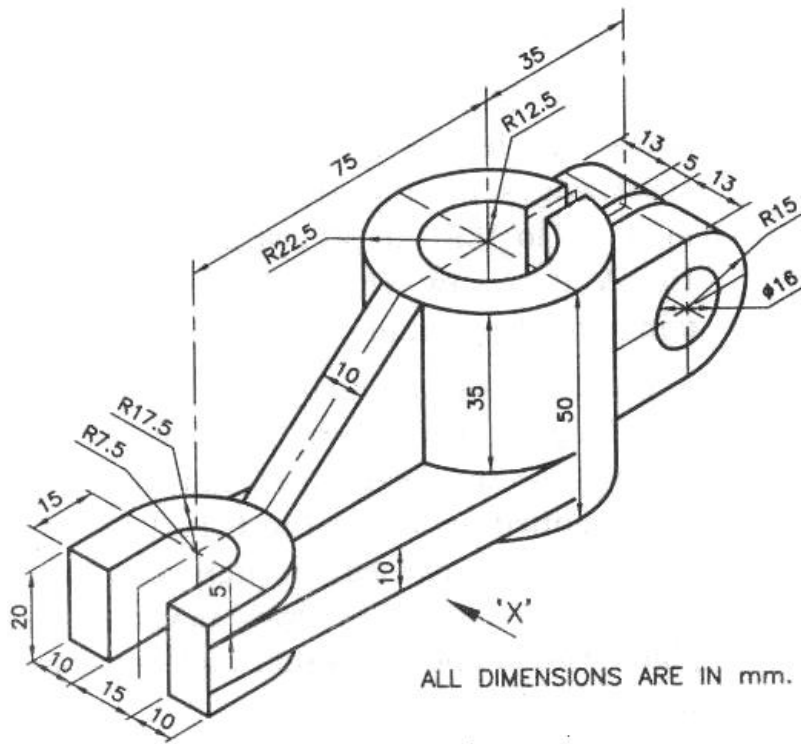


Figure 1

Or

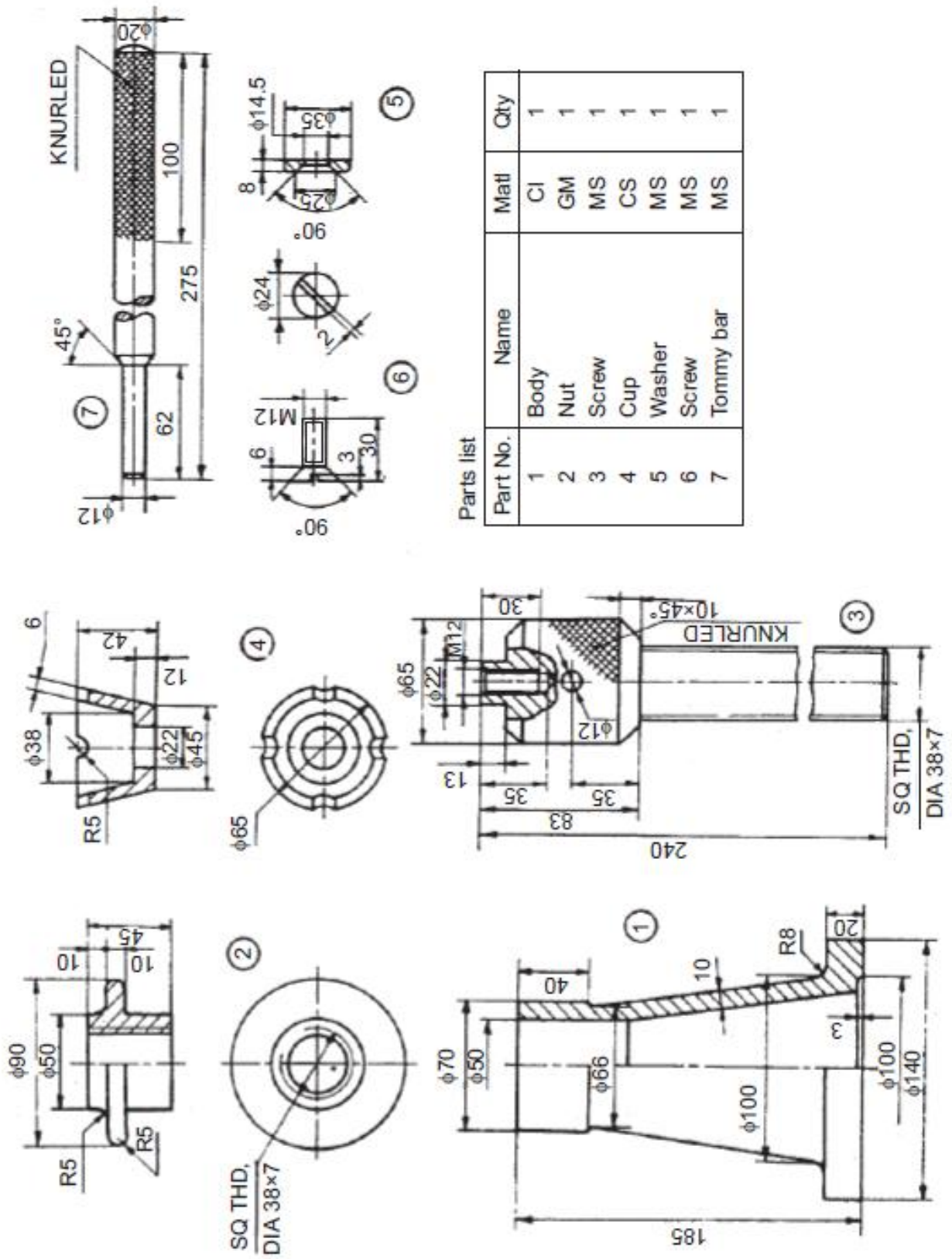
- (b) (i) Calculate the fundamental deviations for the following hole sizes:
- (1) 40 D9                      (2) 65 F8.                      (10)
- (ii) Explain the different types of fits.                      (10)
2. (a) (i) Briefly explain the methodology of indicating surface roughness in drawings.                      (10)
- (ii) Briefly explain the symbols for specifying the directions of lay.                      (10)

Or

- (b) List the different types of thread profiles and explain any four types with neat sketches.                      (20)

PART - B (1 x 60 = 60 Marks)

3. (a) Draw the following assembled views of a screw jack, details of which are given in Figure - 2.
- (i) Half sectional front view
- (ii) Top view                      (60)



Parts list

Part No.	Name	Matl	Qty
1	Body	CI	1
2	Nut	GM	1
3	Screw	MS	1
4	Cup	CS	1
5	Washer	MS	1
6	Screw	MS	1
7	Tommy bar	MS	1

Figure 2

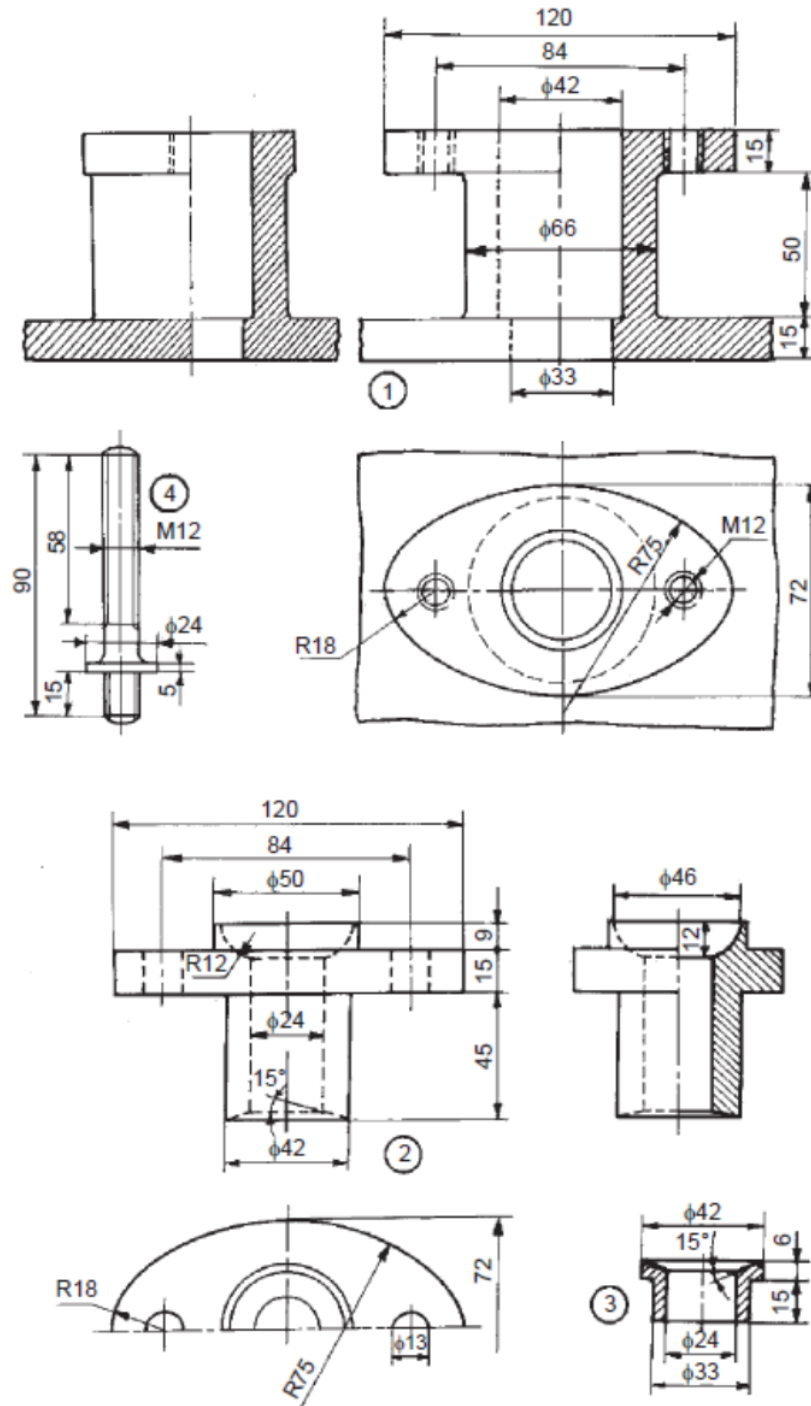
Or

(b) Draw the following assembled views of stuffing box, details of which are given in Figure – 3.

(i) Half sectional front view

(ii) Top view

(60)



Parts list

Part No.	Name	Matl	Qty
1	Body	CI	1
2	Gland	Brass	1
3	Bush	Brass	1
4	Stud	MS	2
5	Nut, M12	MS	2

Figure 3