

Reg. No. :

--	--	--	--	--	--	--	--	--	--

Question Paper Code: 50746

B.E. / B.Tech. DEGREE EXAMINATION, MAY 2017

Fourth Semester

Mechanical Engineering

15UME406 – MACHINE DRAWING

(Regulation 2014)

Duration: Three hours

Maximum: 100 Marks

Answer ALL Questions

PART A - (2 x 20 = 40 Marks)

1. (a) (i) Explain with simple sketch the full section and half section with a suitable example. (10)
- (ii) Discuss in detail with suitable examples the situations where the revolved section and broken section is carried out. (10)

Or

- (b) (i) Describe in detail the different types of fits selection used in assembly. Cite and example. (10)
 - (ii) Explain in detail the geometric tolerance with suitable example and state the purpose of tolerance. (10)
2. (a) Sketch the Following threaded profile for a nominal diameter of 30 mm and pitch 2.5 mm. State any four advantages of each. Assume suitable length of the bolt.
 - (i) ACME thread with hexagonal bolt and nut
 - (ii) V thread with square headed bolt and nut (20)

Or

- (b) How the keys are classified? Demonstrate the different types of key. (20)

PART - B (1 x 60 = 60 Marks)

3. (a) The detailed part of the Universal Coupling is given in the figure 1 assemble the parts and draw the following views.
 (i) Top Half sectional Front View
 (ii) Side view

(60)

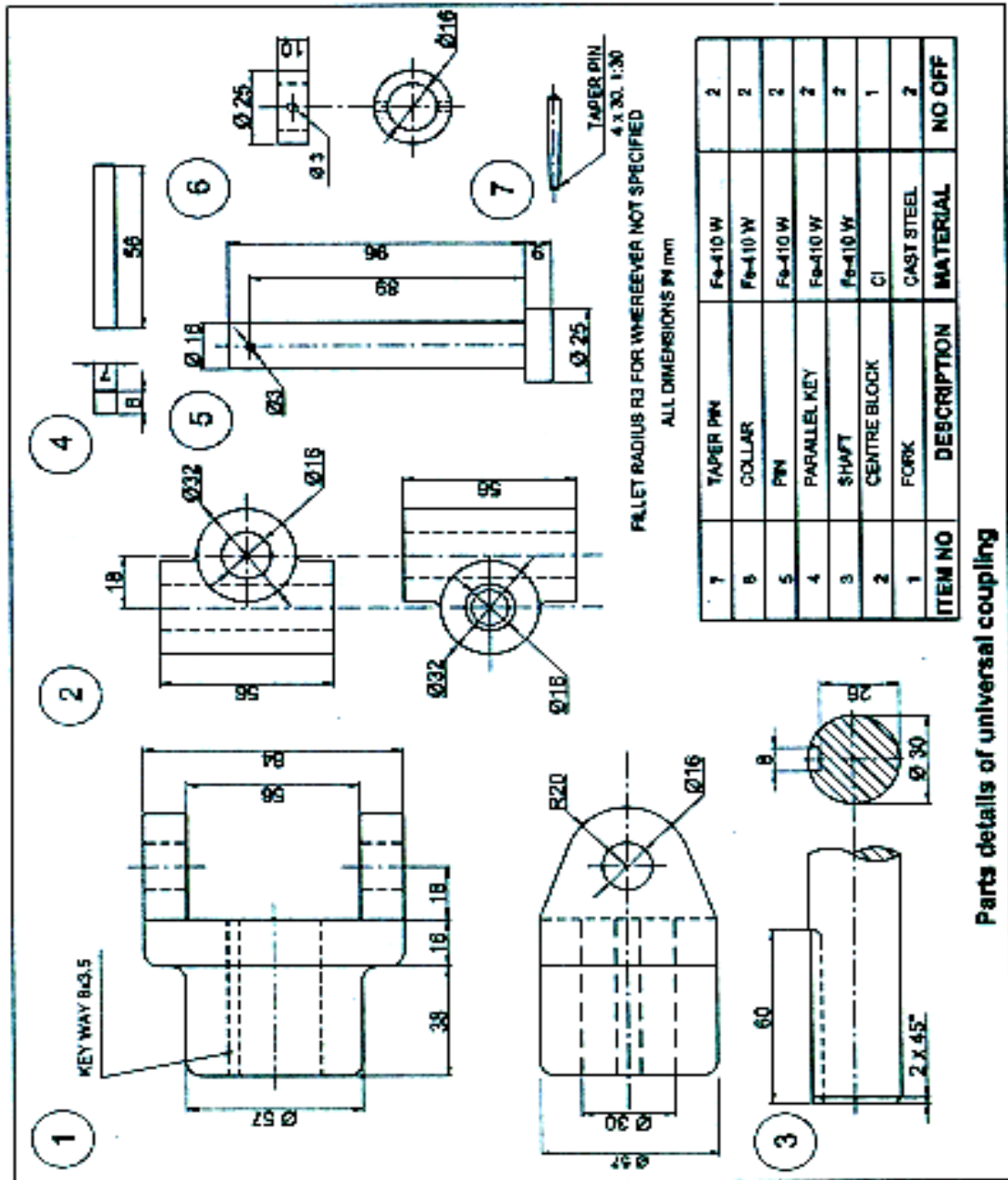


Figure 1

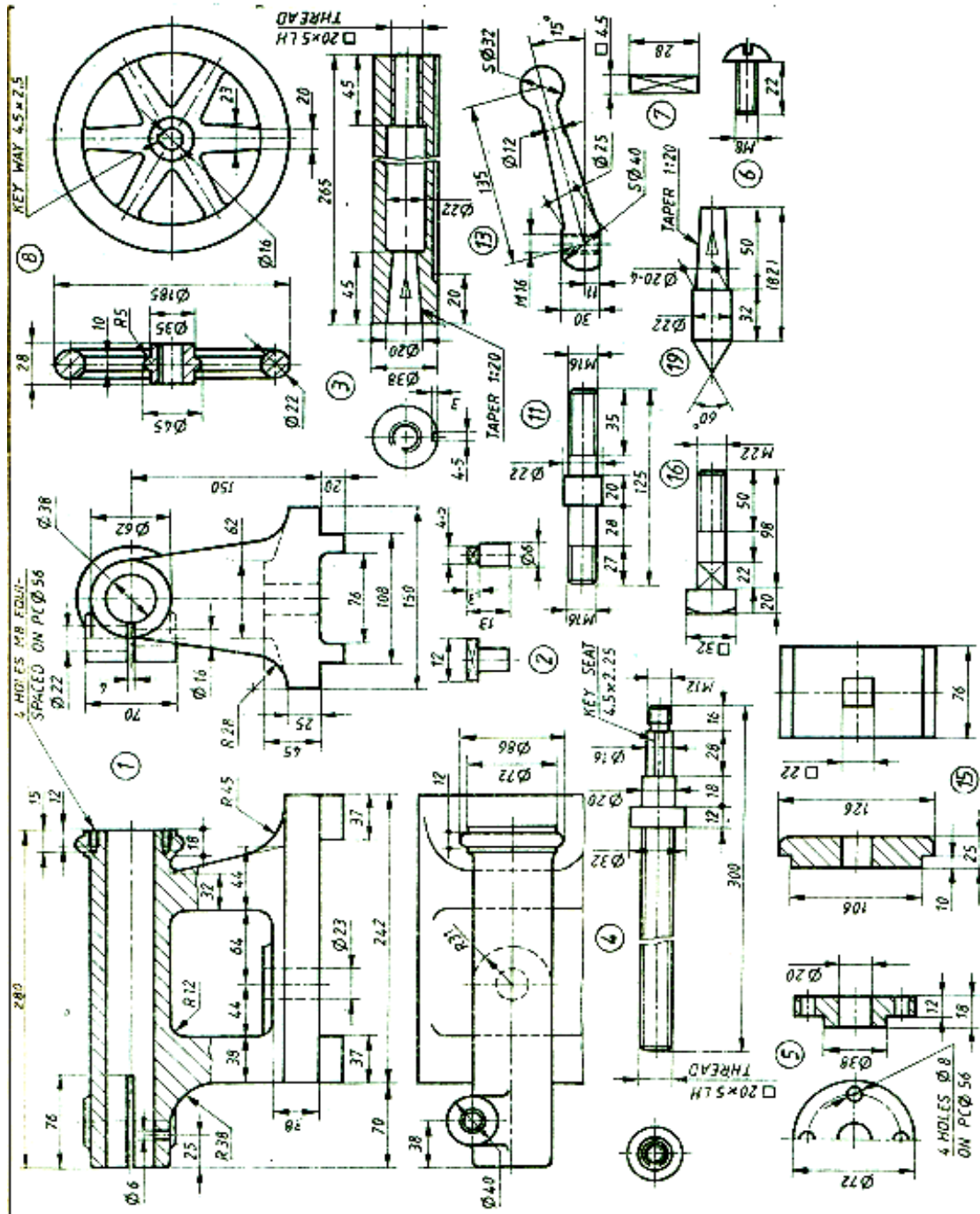
Or
2

(b) The details of the Tail stock are given in the figure -2. Assemble the parts and draw the following views.

(i) Full sectional Front View

(ii) Top View

(60)



Details of a Tailstock

Figure 2

